

play&park
structures®

A PLAYCORE Company



playAbilities™
Celebrating *This*Ability

playAbilities™

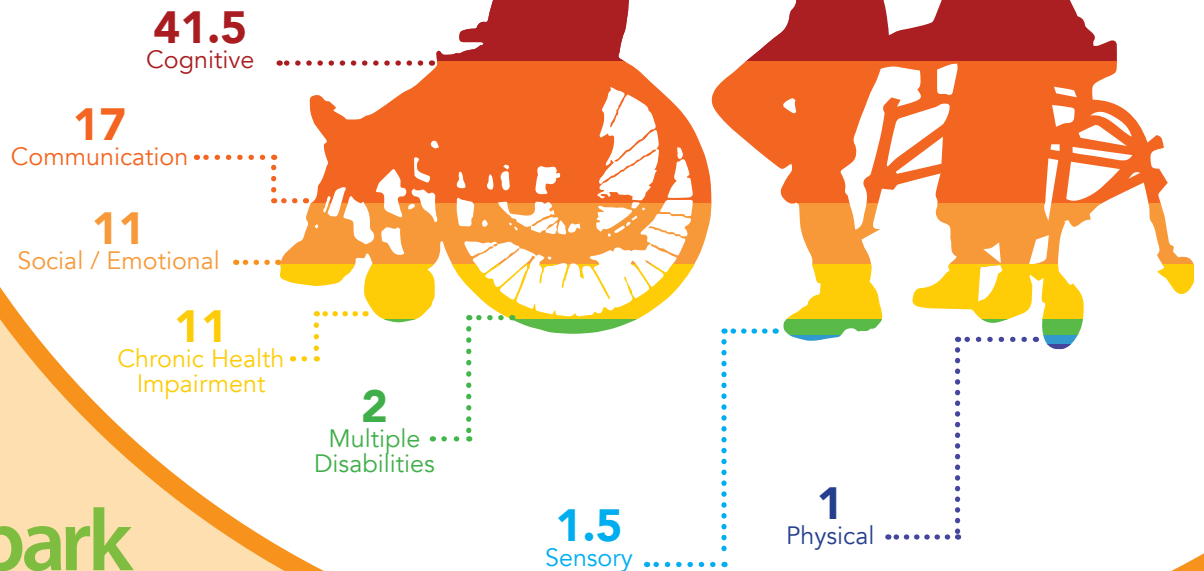
Celebrating *This*Ability



“EVERY CHILD IS A DIFFERENT KIND OF FLOWER
AND ALL TOGETHER MAKE THIS WORLD A BEAUTIFUL GARDEN.”

Out of 1,000 children between the ages of 3 and 21

approximately 85 will have these disabilities*...



**play&park
structures®**

A PLAYCORE Company

We believe PLAY is essential for people of all ages and abilities.

Universally designed play environments should address both physical and social inclusion-supporting everyone's right to meaningful play!

Play & Park Structures is dedicated to creating play destinations that are usable to more people, to the greatest extent possible.

*Source: U.S. Department of Education (2015). Washington D.C.: Dept of Ed. <https://ideadata.org>

CONTENTS

Me2™ Design Guidebook Resources	5
3 Step Design Process	6
National Demonstration Site Program	8
7 Principles of Inclusive Playground Design	10
Exploration Stations	12
CASE STUDY: Dream Come True	16
Sensory Summit Climbers and Links	18
Electronic Sensors and Play Events	22
CASE STUDY: Signal Centers Playground	24
Harmony Music Collection	26
CASE STUDY: Rocket Park Playground	28
More Inclusive Play and Creative Seating	30
CASE STUDY: Destination Park	32

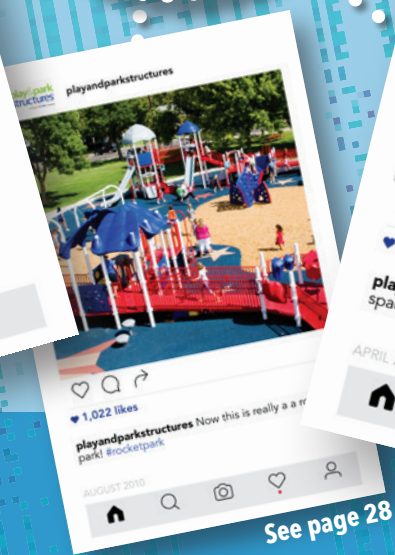
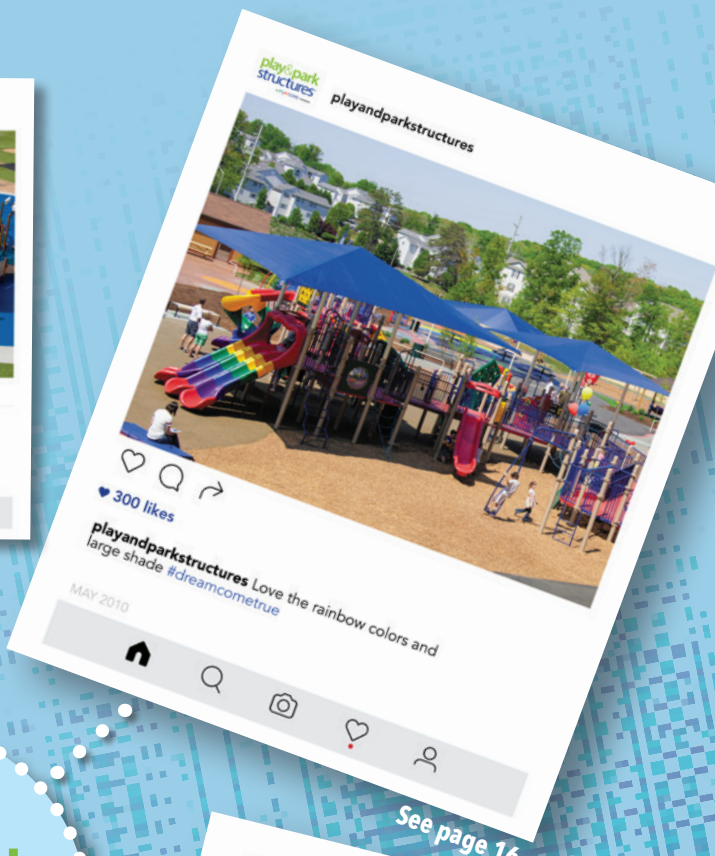
Memorable play

Lenora Cicero and Gretchen Phillips are best friends who enjoy many activities together, including going to the park to play. Lenora has spina bifida, but that doesn't stop her from having fun on the playground. These friends take turns spinning each other on the MaxSpin to enjoy this multi-sensory experience. All children can enjoy memorable play adventures together!



Play & Park Structures' design philosophy recognizes **ThisAbility**, as a way of appreciating similarities and differences and focusing on a child's strengths and what they can do. By embracing this concept, we create awareness about the importance of acceptance and break down barriers so that every child is celebrated for their unique abilities.

Play & Park Structures recognizes the need for inclusive playgrounds to support the diverse needs of communities. We have been designing inclusive playgrounds for over 20 years. Here are just a few of our favorites!



Inclusive Playgrounds



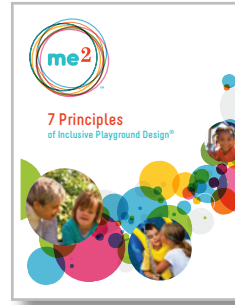
visit our page at [instagram.com/playandparkstructures](https://www.instagram.com/playandparkstructures)

Resources to help create **Inclusive**

The 7 Principles of Inclusive Playground Design® move play environments beyond minimum accessibility and seek to create usable play environments which recognize everyone's right to fully participate in equitable play opportunities and independently engage in the lifelong developmental benefits of play.

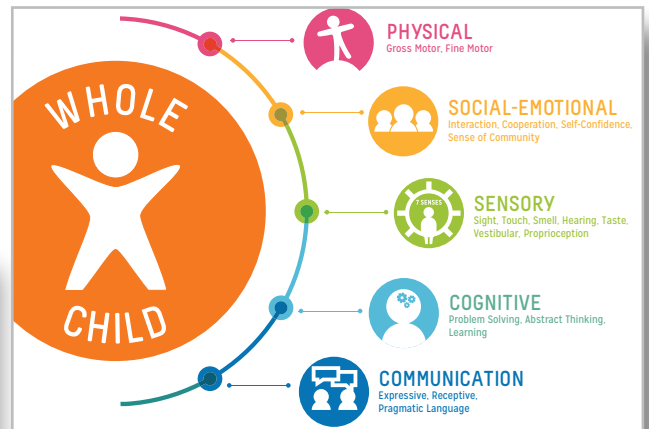


Opportunities for everyone!



Me2sm Design Guidebook
 The principles outlined in the *Me2 Design Guidebook* ensure that children have access to opportunities to be smart, included, safe, independent, active, comfortable, and experience fair and equitable play. Play & Park Structures is dedicated to inclusive play environments where everyone can be part of the fun.

Developed in partnership with **PLAYCORE** and **Utah State University**
Building communities through play and *Building Blocks of Inclusion*



Understanding Whole Child Development: Physical, Social-Emotional, Sensory, Cognitive, & Communication

Playgrounds can be special places where the developmental needs of all children, including those with disabilities, can be secured by intentionally providing opportunities for physical, social-emotional, sensory, cognitive, and communicative benefits of play. Children with disabilities need to be able to explore and interact with objects and the environment to support their physical development. Investing in inclusive play for children with disabilities requires supporting their interactions with peers to develop social learning, problem solving, social exchanges, cooperation, turn-taking, roles, and the empathy necessary for social and emotional development. The coordination of joint activity, which occurs across the social environment of play, is critical to cognitive development and must be available to children with disabilities. Positive

sensory development requires children with disabilities be able to regulate their sensory input within an environment. Communication development occurs when children with disabilities are able to independently model social interactions and effectively communicate with their peers. Researchers, educators, and early childhood professionals have emphasized the interrelatedness and interdependence of developmental domains and processes. The developmental domains are linked not only with one another, but also with factors such as culture, social relationships, experience, physical health, mental health, and brain functioning (Diamond, 2007). Therefore, the process of creating truly inclusive and embracing play experiences should start with an appreciation of the five domains of child development.

Breaking Down Barriers to Inclusion

Inclusive Community:

- Creating Awareness
- Breaking Down Barriers
- Fostering Friendships

Playground Activities
 To Foster Friendships Through Inclusive Play

2 Play Together[®]

Celebrate inclusion across communities by creating awareness, breaking down barriers, and fostering friendships. 2 Play Together playground activities take inclusive play to the next level by promoting character development. This guide gives teachers and programmers strategies to promote meaningful play, understanding, and fun between children with and without disabilities.

Developed in partnership with **PLAYCORE** and **Lekotek**
Building communities through play and *Building Blocks of Inclusion*
 A division of Anixter Center

Supporting inclusive play experiences in communities, PlayCore's Center for Professional Development utilizes a network of scholar partners, industry partners, and presenters to offer quality learning opportunities that support play and recreation initiatives.

A Play & Park Structures recreation consultant can schedule continuing education presentations to help professionals and communities advocate the health benefits of physical activity, the developmental benefits of play, and the social benefits of inclusion.

Contact your consultant to schedule a session today at playandpark.com/consultants

We bring your
playAbilitiesTM
playground vision to reality
in **3 easy steps!**

1 We start with a **vision**

2 We collaboratively refine your vision using
**The 7 Principles of Inclusive
Playground Design**[®]



3 We create a fully rendered **Inclusive 3D image**,
bringing your vision to reality!



Douglas Road Elementary School Lambertville, Michigan

Two brothers inspired this unique, themed playground, that celebrates a place where all children, regardless of their abilities, can play together. Surrounded by poured-in-place, blue-tinted rubber surfacing designed to represent water, the new ship-themed structure features two towering masts complete with pirate's flags and a generous deck to accommodate an extra large crew. Once children reach the main deck area, two separate ship's wheels allow for multiple navigators to man the helm of this whimsically designed vessel.

Watch the story unfold at: playandpark.com/stories/schools/douglas-road-elementary.



PlayCore's National Demonstration Site Program

7 Principles of Inclusive Playground Design[®]



**Shine a spotlight
on community values**



Abingdon/Coomes Center Playground Abingdon, Virginia

Parks and Recreation Director Kevin Worley wanted to find a way to create a more functional playground - one that would benefit children who have sensory needs as well as address the needs of body size, posture, and challenges with mobility and motor control. This playground addition was very meaningful to him because of the time he dedicates to local children with special needs.

Kevin achieved his goal in June of 2016 when the grand opening was held for the new Imagination Station playground, providing quality play opportunities for children of all abilities.



By thoughtfully aligning your outdoor play environment with research-based best practices, your project can be designated as a National Demonstration Site and serve in a network of leadership case examples that address the local needs and goals of their community stakeholders. Your project will gain national awareness through various media outlets and receive recognition and signage for serving as a national model.

OVER UNDER IN ON AROUND

We create **inclusive** play opportunities **everywhere!**

The overall vision for this playground began as a dream by the Autism Hope for Families support group, started by Phil and Nikki Jacobs. As local parents, the Jacobs' had a vested interest in this playground. Their 6-year-old daughter, Raylin, was diagnosed with autism at the age of 21 months. The Jacobs' provided valuable input into the playground design, and envisioned a space where all kids can play together, regardless of their abilities.

"We wanted a place where Raylin could go and be among other children. The socialization aspect of a playground teaches children to accept others in a happy, unstructured environment," said Nikki.



Using research-based design to help customize inclusion across your whole environment



1 Curved Chime
Inclusive Music offers developmentally appropriate activity for multi-generational users

2 TurnAcross
offers choices with how users enjoy and interact

5 Seating creates 'jump-in points' and areas for supervision

Unity Adaptive Playground
Chanute, Kansas

1

Be Fair

The play environment promotes **equitable** use as it is useful and marketable to people with diverse abilities. It encourages intergenerational play by supporting the active participation of individuals with diverse abilities, needs, and interests.

2

Be Included

The play environment offers **flexibility** in use and accommodates everyone's right to play by being more usable, by more people, to the greatest extent possible.



3

Developmental play patterns such as 'looping' promote active play

6

The **Hand Pedaler** provides an equitable alternative in close proximity to the horizontal ladder for a rewarding upper body experience.

7

Shade provides relief from environmental conditions

4

Movement activities like the **Made-for-Me Swings**, **Oval Swing**, and **Whirl with Me** offer sensory rich feedback and encourage social interaction and cooperation.

The 7 Principles of Inclusive Playground Design®

For a complete overview of the principles, guidelines, and benefits, reference the Me2 Design Guidebook. Ask your Play & Park Structures Consultant for a free copy.

3

Be Smart

The design is **simple** and **intuitive**, making it easy to understand, allowing individuals to be successful and gain confidence through play.

4

Be Independent

The design communicates **perceptible information** and allows individuals to effectively explore, interact, and participate in sensory rich play as independently as possible.

5

Be Safe

The play environment **is tolerant of error** by meeting current safety standards, considering unintentional actions, and promoting emotional security for personal growth and development.

6

Be Active

The play environment can be **used efficiently**, supporting diverse opportunities for children to engage in sustained, healthy, physical activity with an emphasis on social participation and cooperation.

7

Be Comfortable

Appropriate **size and space** is provided for approach and use so that the play environment is comfortable for individuals with diverse sensory needs, body size, posture, mobility, environmental sensitivity, and motor control.

Exploration Stations



Play & Park Structures Exploration Stations provide unlimited opportunities for open-ended play. Unique shapes, interesting textures, and stimulating colors provide an immersive, sensory experience, and invite children of all abilities to explore and interact with one another as they continually design their own play experiences.



Exploration Stations can be integrated

into existing play spaces to create a more inclusive environment. The range of available configurations provides lots of flexibility to accommodate various sized play settings. Additionally, each Exploration Station offers different routes of travel, promoting developmental and rich sensory benefits to the users.

Every child
loves a
Car Wash -
our inspiration



Squeeze Bubbles'
internal spring
element provides
up & down motion
when straddled
by children.

2-5 5-12

Exploration Matrix | 68119

ASTM Use Zone: 21' x 26' | 645 cm x 799 cm

Fall Height: 7' | 215 cm



2-5 5-12

Exploration Junction | 68116

ASTM Use Zone: 21' x 26' | 645 cm x 799 cm

Fall Height: 7' | 215 cm

Choice of metal colors Other component colors as shown

Exploration Stations

Central Hub creates a cozy spot while still affording excellent supervision qualities.



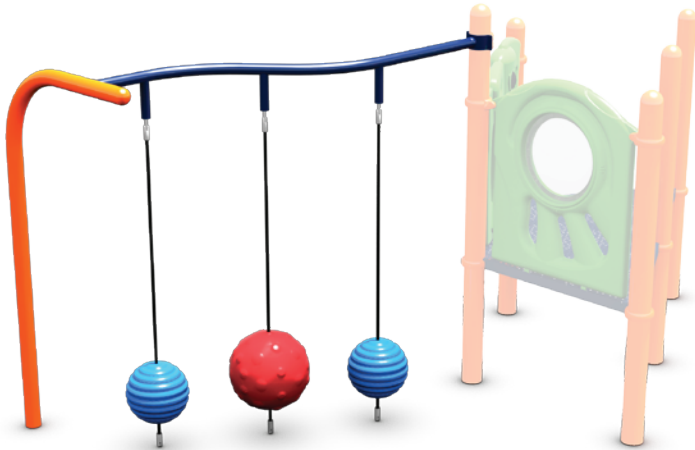
2-5 5-12

Exploration Gateway | 68117
ASTM Use Zone: 31' x 31' | 952 cm x 952 cm
Fall Height: 7' | 215 cm



The easy grip texture of the play elements provides a variety of sensations and unlimited ways to explore and discover.

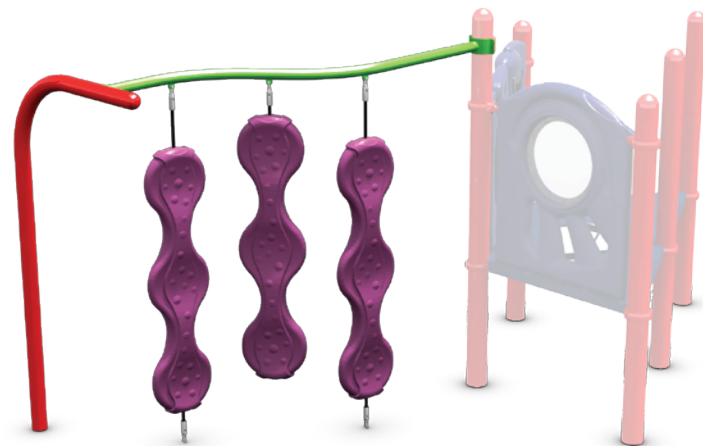
The components are reinforced with durable cable that extend the entire length of the product. Polyurethane foam is then coated with a durable, weather-resistant polyurea skin to create unique textures in a suspended play element.



2-5 5-12

Squeeze Bubble Attachment

These colorful, round orbs feature a soft textured surface that includes an internal spring element providing up and down motion when children straddle them.



2-5 5-12

Drizzle Wall Attachment

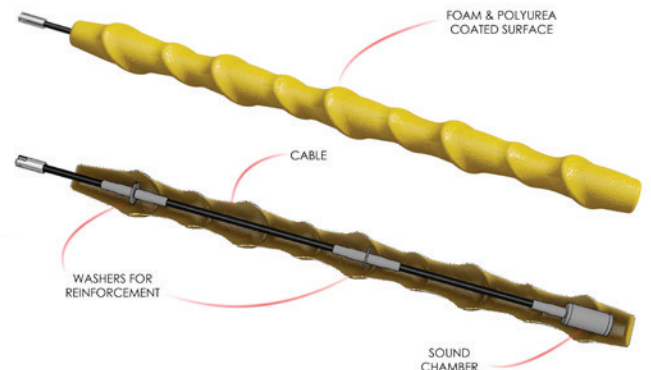
Partially tethered, textured play components attach to existing uprights, adding more inclusive play to a play space. Spins 360 degrees.



Corkscrew Cluster

Featuring suspended play elements that not only provide gentle pressure as children pass through, but also include an auditory element when moved.

Corkscrew Cluster Cross Section



These products are best installed in private, supervised environments.

Case Study:

Building Community with a community build

Dream Come True Playground | Harrisonburg, Virginia





The 'Dream Come True Playground' exemplifies the positive impact even a small Girl Scout Troop can have on a community. Deeply committed to achieving their goal of barrier-free play for children of all abilities the troop applied for grants, held bake sales, and worked with local businesses and churches to secure funding for their dream. Play & Park Structures is proud to have been a part of this vision and the resulting inclusive play environment where children of all abilities truly have the opportunity to play side-by-side.



Sensory

FREESTANDING

Summit Climbers

Sensory play encourages children to use descriptive and expressive language and the opportunity to communicate with one another. Additionally, sensory play allows children to be in control of their actions and experiences, which boosts their confidence in decision making and encourages them to continue to learn and experiment.



Freestanding climbers are available with 4 levels of Sensory Inserts that were carefully selected to provide tactile, visual, and auditory stimuli.

Base configurations and sensor packages are sold separately. Order one sensor package per configuration.

plug & play

Adaptive Switch

Sensors with adaptive switch capability provide children with limited fine motor skills the ability to independently activate auditory inserts. *Switch not included.*



2-5 5-12

Sensory Summit Range →

Shown with Level 4 Package
ASTM Use Zone: 30'11" x 19'2" | 950 cm x 589 cm
68158 Level 1 – Climber only
68165 Level 2 - Package only
68166 Level 3 - Package only
68167 Level 4 – Package only



A playful transfer point assists individuals transferring on and off the system



2-5 5-12

← Sensory Summit Arch

Shown with Level 2 Package
ASTM Use Zone: 28'2" x 15'2" | 865 cm x 466 cm
68157 Level 1 – Climber only
68162 Level 2 – Package only
68163 Level 3 – Package only
68164 Level 4 – Package only

2-5 5-12

Sensory Summit Roundabout ↓

Shown with Level 3 Sensor package
ASTM Use Zone: 25'11" x 23'7" | 796 cm x 725 cm
68159 Level 1 – Climber only
68168 Level 2 – Package only
68169 Level 3 – Package only
68170 Level 4 – Package only



2-5 5-12

↓ Sensory Summit Ground Transfer

Shown with Level 1 Package
ASTM Use Zone: 21'4" x 16'11" | 655 cm x 520 cm
68161 Level 1 – Transfer only
68174 Level 2 – Package only



2-5 5-12

Sensory Summit Serpentine →

Shown with Level 4 package
ASTM Use Zone: 29'5" x 19'8" | 904 cm x 604 cm
68160 Level 1 – Climber only
68171 Level 2 – Package only
68172 Level 3 – Package only
68173 Level 4 – Package only



Sensory

Summit Climbers & Links

COMPONENTS



2-5 5-12

Sensory Summit **Range Climber**

Deck Height: 2'8" and 3'4"

Shown with Level 4 package



2-5 5-12

Sensory Summit **Ascend Climber**

Deck Height: 4'8" and 5'4"

Shown with Level 2 Package



2-5 5-12

Sensory Summit **Arch Climber**

Deck Height: 2'8" and 3'4"

Shown with Level 3 Packages



Play Sensors offer a rich and balanced sensory experience, providing visual, tactile, and auditory activities.

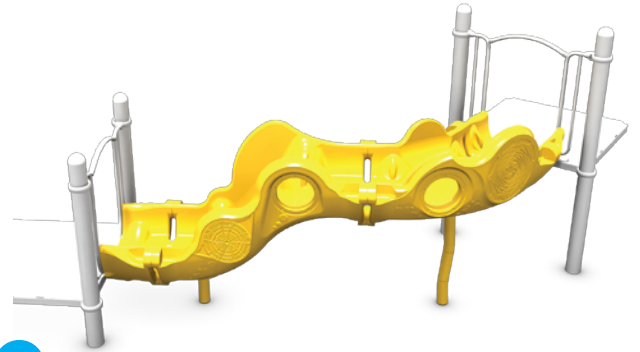
Base configurations and sensor packages are sold separately. Order one sensor package per configuration.



2-5 5-12

Sensory Summit Serpentine Link

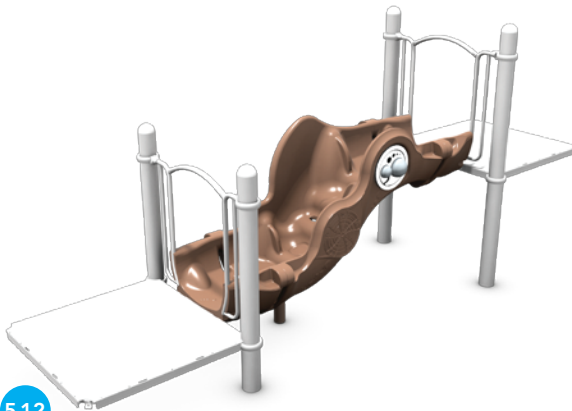
Deck Height: 8" to 4'
Shown with Level 2 Package



2-5 5-12

Sensory Summit Range Link

Deck Height: 8" to 4'
Shown with Level 2 Package



2-5 5-12

Sensory Summit Arch Link

Deck Height: 8" to 4'
Shown with Level 2 Package



2-5 5-12

Sensory Summit Bridge Link

Deck Height: 2'8" - 6'
Shown with Level 3 Package

Embedded handholds for fine motor grasping



2-5 5-12

Sensory Summit Transfer

Deck Height: 1'4"



2-5 5-12

Sensory Summit Ascend Link

Deck Height: 8" - 2'
Shown with Level 4 Package

Optional Sensors

Visual Sensors



Pachinko



Color Wheel



Flat Mirror



Fun Mirror



Hour Glass



Twist Ball



Hypnetic



Yellow



Green



Red



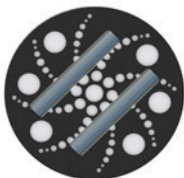
Orange



Blue

These 3 Sensors are
Adaptive Switch Ready

Auditory Sensors



Spin Chime



Bells



Jam Box



Piano



Make It Rain



Giggler



Wave Sound

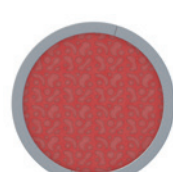


Switch not included

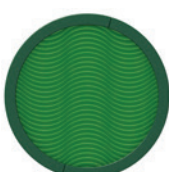
Tactile Sensors



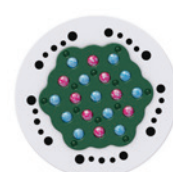
Genoa



Lava



Mezzo



Roller Ball

Climber and sensory packages are purchased independently of each other. One sensory package can be purchased for each climber.



Electronic Play Events



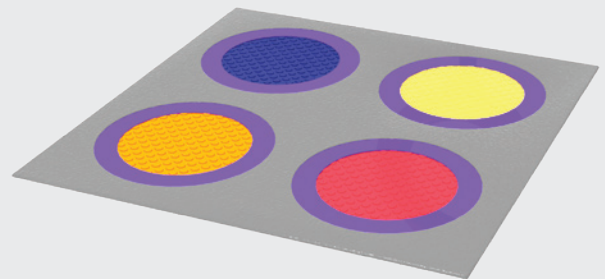
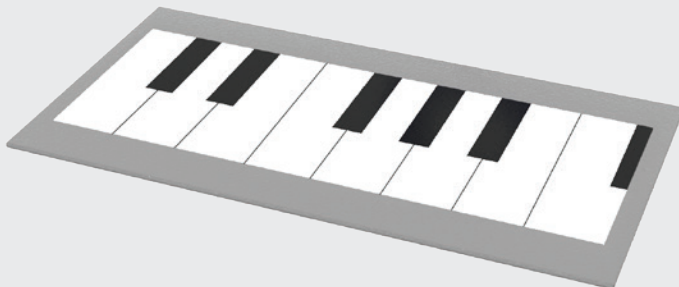
Activity Meter
68115

These two unique ground-level platforms with beveled edges create delightful piano sounds or rhythmic drum beats when pressure is applied and allow mobility devices to roll up and onto the pads to activate. For children with physical disabilities, the **Activity Meter** includes a port for an adaptive switch, allowing children to activate percussive beats or to play songs.

Harmony Pad | 68132



Soundboard | 68133



Spinning Seat | 68156

The Spinning Seat provides proprioceptive movement experiences, encourages cooperation, and features supportive seats and handles to help users sustain engagement.



Case Study:

Sensory, therapeutic expansion

Signal Centers Playground | Chattanooga, Tennessee





Signal Centers designed their vision of a multiple age-range, inclusive play environment that factored in challenging topography, and the therapeutic services that their center offers to the community. With constituents that range in age from 6 weeks to adulthood, the playground needed to serve both children with and without disabilities. Not only is Signal Centers playground aligned to the 7 Principles of Inclusive Playground Design, it is also certified as a NatureGrounds® playground - infusing nature into the play environment.



Harmony

Music Collection

This family of creative musical instruments presents an innovative way to introduce the soothing sounds of metallophones and chimes, coupled with the rhythmic percussive beat of drums, in an outdoor environment. Tuned to a Pentatonic Scale, the resonating sounds provide a positive introduction to music for all users.



Sonata | 68128

Tuned in the key of C Major, the resonators give this metallophone a warm tone that lingers for three to five seconds.

The importance of music

Brain Power: Music helps build reasoning skills and improves memory

Soul Food: Music helps build confidence, encourages creativity, and can reduce anxiety

Heart Health: Playing and listening to music can reduce stress, ease pain, and improve sleep



Presto | 68129

23 resonated bars provide a bold, gong-like sound, tuned to the key of C Major and A Minor.



Allegro Set of 7 | 68127

Offering both auditory and vestibular sensory engagement. Available in sets of 1, 3, and 7 for several configuration possibilities.

All instruments feature **Adaptive Mallets** to allow children with limited fine motor skills the ability to independently participate.



Conga Drums Set of 2 | 68130

Conga Drums Set of 3 | 68140

The Conga Drums inspire spontaneous improvisation as children create resonating vibrations with their hands. Available in two or three drum configurations.

This unique curved instrument can be played from either side, and can be positioned linearly or in a circle to create a cozy space. 4 Mallets Included.



Curved Chime | 68131

Single A Minor Chime | 68143

Single C Major Chime | 68144

Case Study:

Artistic, thematic use of space

Rocket Park Playground | Grand Junction, Colorado





Rocket Park is a school and park partnership used by several therapeutic groups in the area as well as schools. The updated safety surfacing, ramps, and space-themed amenities chosen for the new Rocket Park was a substantial investment for the community, but as the park and recreation staff mentioned, it was well worth it. Revamped Rocket Park opened in the spring of 2010, and is now one of the top three most visited and utilized parks in the city.

more inclusive play

Incorporating two individual seats, a bench seat and ample room for sitting and standing, the **Whirl with Me™** allows multiple children the opportunity to socialize with peers as they spin and whirl.



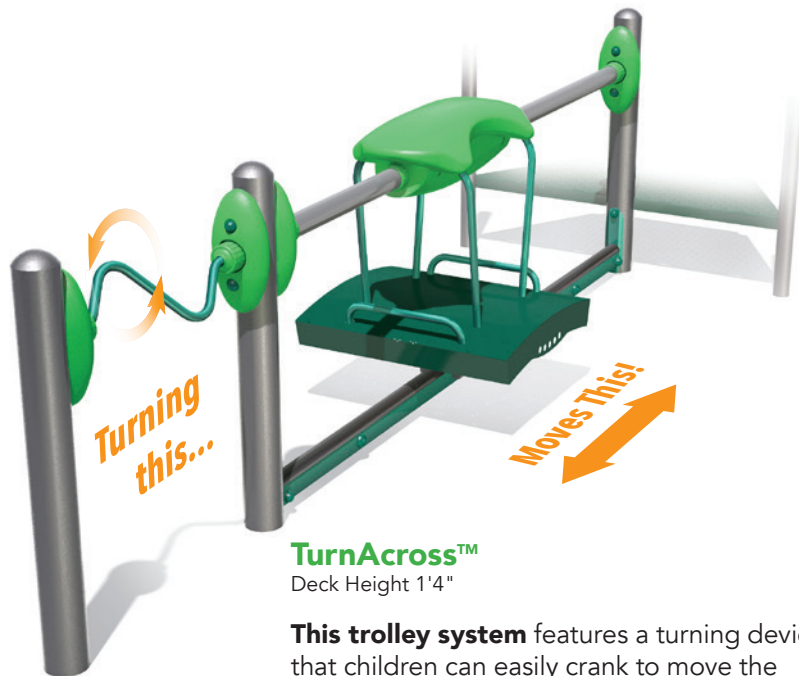
Whirl with Me™
with Me



Whirl with Me with Handle | 68049

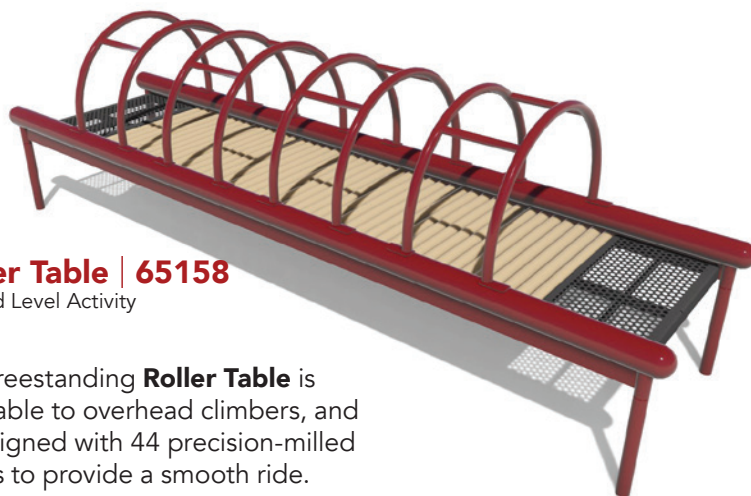
Whirl with Me | 68048

ASTM Use Zone: 17'8" x 17'8"



TurnAcross™
Deck Height 1'4"

This trolley system features a turning device that children can easily crank to move the gondola back and forth along a rubberized track. The ground level trolley and platform is easy to access, making it a great inclusive design for children of all abilities.



Roller Table | 65158
Ground Level Activity

This freestanding **Roller Table** is equitable to overhead climbers, and is designed with 44 precision-milled rollers to provide a smooth ride.

Roller Slide
Deck height 4' 8"

Provides rich sensory feedback to the lower extremities while enhancing core stability and dynamic balance.

Seating Benches & Pods

Whimsical, creative seating that provides a place to observe, rest or relax while subtle textures create a unique sensory experience.

These seating products are made with a polyurethane foam that is coated in a durable, yet flexible polyurea skin to provide a cozy and fun place to rest. Each seating product is reinforced with a metal frame for added support.



Drizzle Bench | 68121

Playful seating provides a passive area for 'Jump-in points' where children can observe and understand play activity prior to participating.



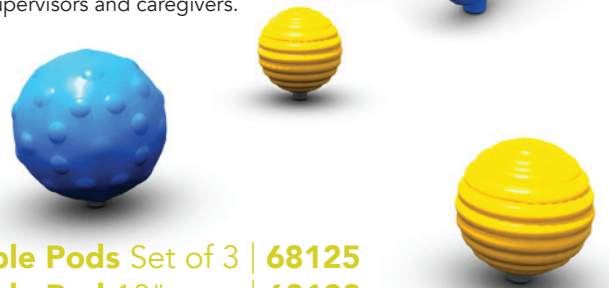
Drizzle Bench with back | 68126

Cushioned, textured coating provides an area for gathering and socializing as well as a comfortable seating area for supervisors and caregivers.



Drizzle Pod Bench | 68124

This creative bench allows children to retreat, observe, and integrate into play as they are emotionally ready to process the environment and engage in play.

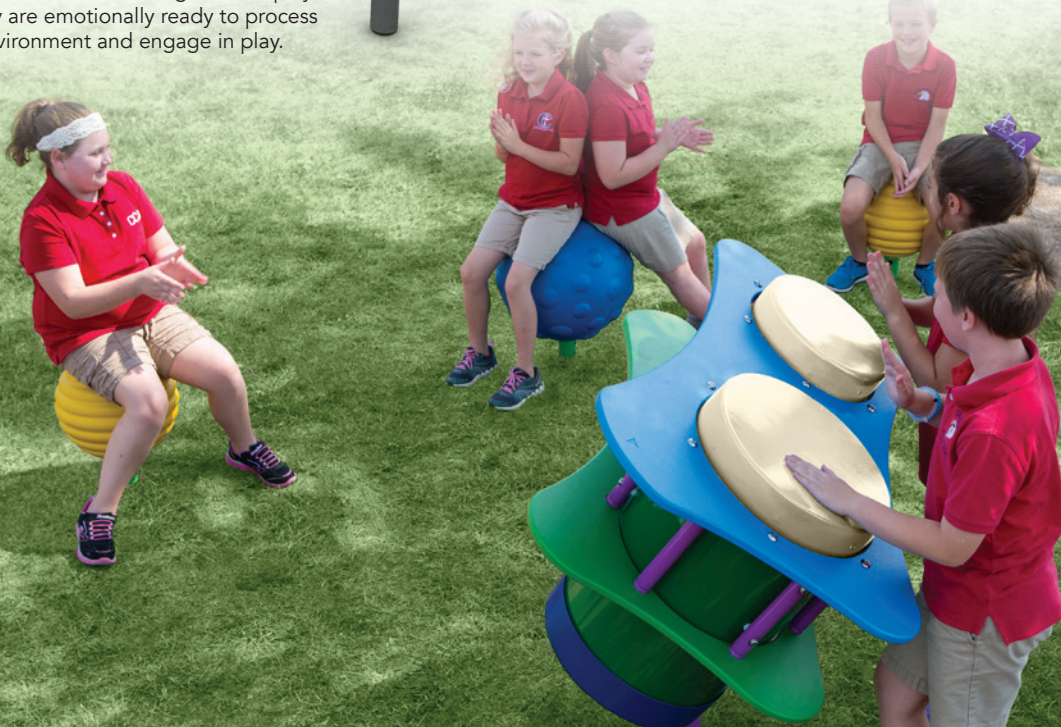


Bubble Pods Set of 3 | 68125

Bubble Pod 18" | 68122

Bubble Pod 14" | 68123

We've taken the current trend of balance balls and transformed them into textured, playful, outdoor seating that allows children to invent creative games, and refine their balance skills. *Surfacing required if intended as play equipment.*



Case Study:

A Community's favorite recreation space

Destination Park | Chesapeake, Virginia



"Other children come to the park and they run and they play. Lenora can do the same thing at Destination Park. Unlike other parks where I have to help her get around, here she can do everything herself. It's good for her. She can be just like any other child on the playground and I love that."

– **Lorraine Cicero**, mother of Lenora Cicero





The new **Inclusive playground at Destination Park, in Chesapeake, Virginia** has become the community's favorite recreation area for outdoor play. Located in the bustling community of Deep Creek, this new playground allows children of all abilities to play together and was awarded National Demonstration Site status by PlayCore. The shaded structure provides comfort from the sun, and a wide variety of activities including multiple electronic, interactive panels invite children to play music, learn, and even play games. The covered pavilion has also become a favorite spot for picnics and outdoor birthday parties.





play&park structures®

A PLAYCORE Company

401 Chestnut Street, Suite 410
Chattanooga, TN 37402
800.727.1907

playandpark.com

 facebook.com/PlayandParkStructures

 instagram.com/playandparkstructures

Inclusive play rises to a whole new level when integrating topography into the creative design process. Multiple levels translate into more ways to have fun!